

## INFO DOCUMENT G – SCREENING IN A SECOND FLOOR BALCONY

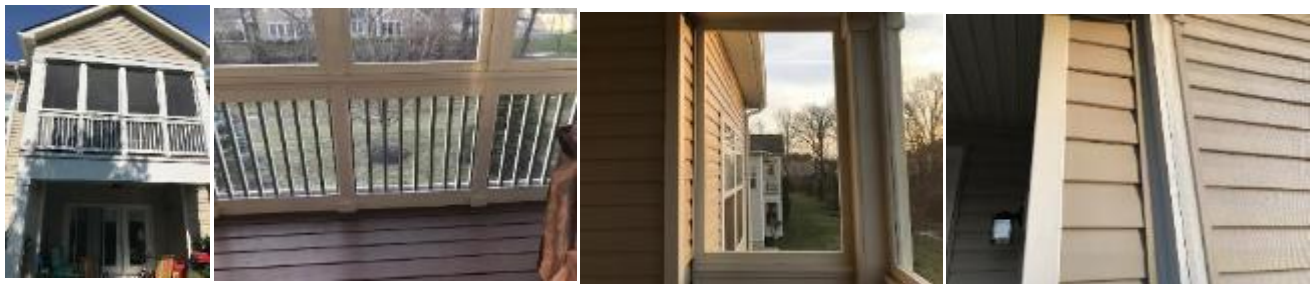
### 1 - SPECIFICATIONS FOR SCREENING IN A SECOND-FLOOR BALCONY

1. Below are the specifications if you wish to have your balcony screened in. These are the specifications and requirements only for second floor Balconies. First floor patios have a similar, but different set of specifications, and may include a screened door. These specifications and guiding pictures must be used when requesting an external building alteration. Contact the Management Company for additional information and to submit the required documents for Association Board approval.
2. Unless the Unit’s Owner is a Carpenter, the work must be performed by a professional contractor.
3. The Owner must submit a *Request for Alterations* prior to the start of any work for Board approval.

#### 1 - STANDARD SUPPLIES AND BUILD

- 4x4x8 cedar Lumber – 3 (match the timbers that is already there)
- 1x2x8 cedar board – 13 (nail board)
- 1x6x8 cedar board – 6 (base board – attaching to side wall of building. Cut out siding width of cedar board and install cedar board)
- 7/8x3 - 8 feet cedar board – 24 (trim in around windows)
- 11/16x8 feet quarter round – 6 (finish trim)
- 12 feet j-trim 3/4” – 2 (siding)
- 1x18 gauge galvanized finish nails - 1 box
- #6 x 1-inch bronze epoxy flat exterior screws – 5 – 40 count or one large box
- 18 ga. 1 inch galvanized brad nail – 1 box
- 18 – Gauge - ½ - leg x ¼ stainless finish staples – 2 boxes
- 4 feet x 25 feet – screen - one roll - fiberglass
- Outdoor paint to match current building paint.
- Paint – Color = Quail Egg – Satin Enamel Exterior Latex

### 2 - PICTURES OF COMPLETED SCREENED 2<sup>ND</sup> FLOOR BALCONY



Second Floor Screened in Balcony